

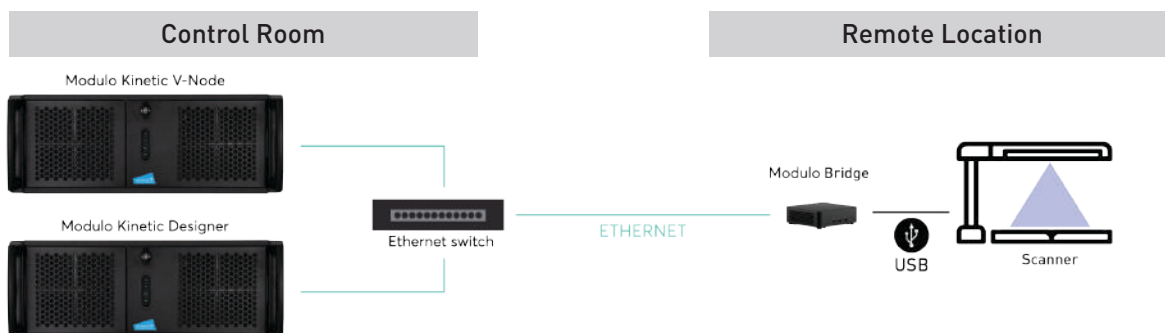
# Modulo Bridge

REF: MOD-BRDG



## A compact network bridge by Modulo Pi Optional hardware solution to create a network bridge with Modulo Kinetic

To facilitate communication with USB devices that lack Ethernet support, Modulo Pi provides Modulo Bridge. In installations where a USB device - such as a scanner - is located remotely from the Modulo Kinetic Designer workstation, the **Modulo Bridge** hardware solution enables the creation of a network bridge, seamlessly connecting the devices.



## Hardware specifications

**Operating System:** Windows 11 CBB x64  
**RAM:** 2 x 4GB DDR4  
**Storage:** 1 x SSD 500GB (100GB: OS + 400GB: DATA)  
**Processor:** Intel® Core™ i5  
**LAN:** 1 x RJ45 1000Mbps

**USB:** 3 x USB 3.1 (Gen 2)  
**Dongle:** Slim external USB dongle for protection  
**Physical video output:** 1 x HDMI 2.0a and 1 x mini DisplayPort connector

## Environmental specifications

Non-operating temperature: -40°C to 60°C  
Operating temperature: 0°C to 50°C

The operating temperature of the board may be determined by measuring the air temperature from the junction of the

heatsink fins and fan, next to the attachment screw, in a closed chassis, while the system is in operation.

# Supported devices

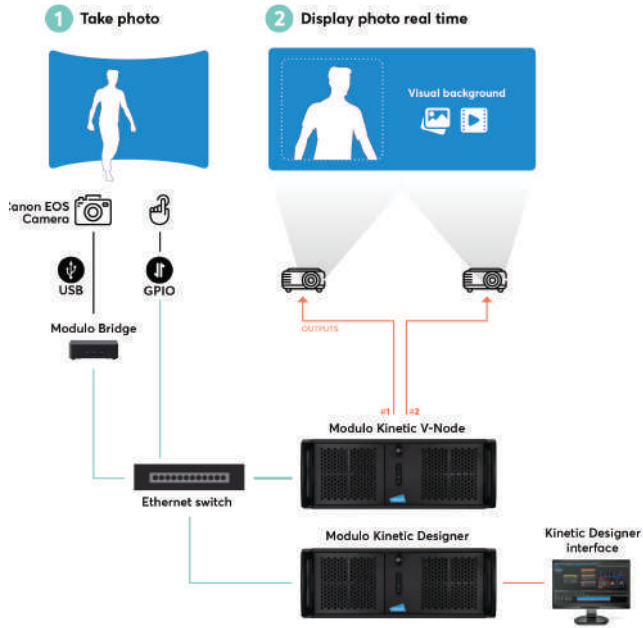
Image scanners compatible with the 32-bit and 64-bit TWAIN protocol



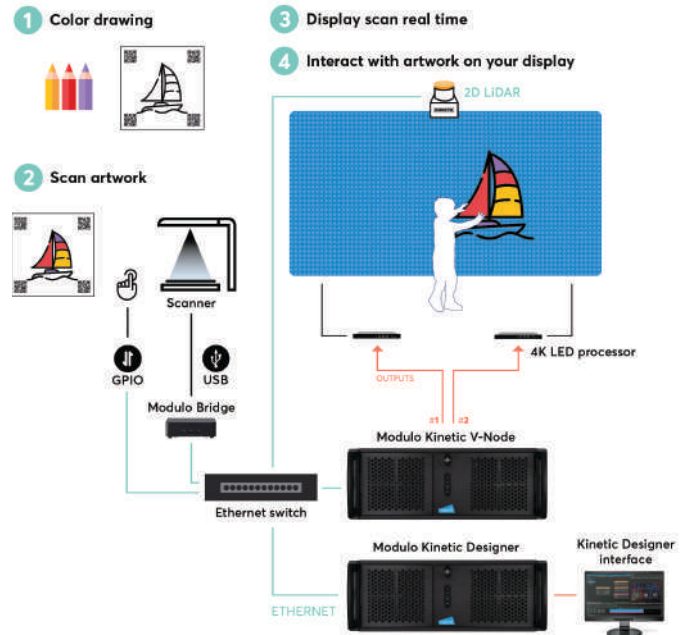
Canon EOS cameras



Projection of photographs real time with Modulo Kinetic and Modulo Bridge



Interactive drawings display based on Modulo Kinetic, Modulo Bridge, a scanner and 2D LiDAR



## Complimentary

Power: 12-19V D.C 90W (external power supply) with EU power cord  
 VESA bracket with 4 x wall screws and 2 x chassis screws

### Warranty

2-year return-to-base

## Physical specifications

Product	W	H	D
Mechanical chassis size	117 mm 4,60"	112 mm 4,40"	37 mm 1,45"
Weight	~ 0,6 kg	~ 1,3 lbs	

Shipping	W	H	D
Dimensions	180 mm 7,08"	150 mm 5,90"	110 mm 4,33"
Weight	~ 2 kg	~ 4,4 lbs	